



TETRA TECH
ARCHITECTS & ENGINEERS

Cornell Business + Technology Park
10 Brown Road
Ithaca, New York 14850
Tel. (607) 277-7100
Fax (607) 277-1410

Addendum

Waverly Central School District
Waverly, New York

SED NO. 60-01-01-06-0-001-019

Reconstruction to
Elm Street Elementary School
Phase 1

Tt Project No. 339070-24002

BID Addendum No. 2
to
Drawings and Project Manual

May 16, 2025

To: ALL BIDDERS

This ADDENDUM forms a part of the BIDDING AND CONTRACT DOCUMENTS and modifies the following documents:
Original DRAWINGS dated December 13, 2024
PROJECT MANUAL dated December 13, 2024, and BID ADDENDUM NO.1 dated May 13, 2025.

Acknowledge receipt of the ADDENDUM in the space provided on the FORM OF PROPOSAL

This ADDENDUM consists of (4) pages and the following:

ATTACHMENTS

PRE-BID REQUEST FOR INFORMATION QUESTIONS/ANSWERS

NEW DRAWINGS (8-1/2 x 11)

BA01B	Partial First Floor Demolition Plan
BA02B	Partial Second Floor Demolition Plan
BA03B	Partial First Floor Plan
BA04B	Partial Second Floor Plan
BS01B	Typical Deck Infill
BM01B	Partial First Floor Demolition Plan
BM02B	Partial Second Floor Demolition Plan
BM03B	Partial First Floor Plan
BM04B	Partial Second Floor Plan
BE01B	Partial First Floor – Demolition Plan
BE02B	Partial Second Floor – Demolition Plan
BE03B	Partial First Floor – Power & Comm Plan
BE04B	Partial Second Floor – Power & Comm Plan

NEW DRAWINGS (11 x 17)

BM05B Partial Roof Plans
BM06B Partial Roof Plan

PROJECT MANUAL MODIFICATIONS - MECHANICAL

ITEM 2-C-1: Refer to SECTION 23 82 00 – TERMINAL HEATING AND COOLING UNITS

1. Paragraph 2.2, E, 1, c., AMEND to read as follows:

“c. Building Automation System Interface: Wireless web-enabled BACnet capable controller to allow for remote control.”

DRAWING MODIFICATIONS – HAZARDOUS MATERIAL

ITEM 2-C-2: Refer to DRAWING BH102

1. Detail 1, ADD (2) instances of keynote B at the southwest portion of the building (corresponding drawing grid locations L2 & L6). Refer to 1/BM133 for approximate size and location of RTH-2 & RTH-3.

DRAWING MODIFICATIONS - ARCHITECTURAL

ITEM 2-C-3: Refer to DRAWING BA101

1. Detail 1, AMEND as shown on Drawing BA01B attached to this addendum.

ITEM 2-C-4: Refer to DRAWING BA102

1. Detail 1, AMEND as shown on Drawing BA02B attached to this addendum.

ITEM 2-C-5: Refer to DRAWING BA130

1. Detail 1, AMEND as shown on Drawing BA03B attached to this addendum.

2. Detail 1, at new UV louver openings in Rooms 117 and 121, ADD the following note:

“NEW LOUVER OPENING, SIZE TO BE 78 1/8” X 10 3/8” VERIFY FINAL SIZE WITH MECHANICAL CONTRACTOR AFTER SUBMITTALS ARE APPROVED AND FINAL EQUIPMENT SELECTIONS ARE MADE.”

ITEM 2-C-6: Refer to DRAWING BA131

1. Detail 1, AMEND as shown on Drawing BA04B attached to this addendum.

2. Detail 1, at new UV louver opening in Room 205, ADD the following note:

“NEW LOUVER OPENING, SIZE TO BE 78 1/8” X 10 3/8”, COORDINATE FINAL SIZE WITH MECHANICAL CONTRACTOR AFTER SUBMITTALS ARE APPROVED AND FINAL EQUIPMENT SELECTIONS ARE MADE.”

3. Detail 1, at new PTAC louver openings in Rooms 203A and 203B, ADD the following note:

“NEW LOUVER OPENING, SIZE TO BE 42” X 16 1/16”, COORDINATE FINAL SIZE WITH MECHANICAL CONTRACTOR AFTER SUBMITTALS ARE APPROVED AND FINAL EQUIPMENT SELECTIONS ARE MADE.”

DRAWING MODIFICATIONS - STRUCTURAL

ITEM 2-C-7: Refer to DRAWING BS130

1. ADD Drawing BS01B attached to this addendum.

DRAWING MODIFICATIONS - MECHANICAL

ITEM 2-C-8: Refer to DRAWING BM101

1. Detail 1, AMEND as shown on Drawing BM01B attached to this addendum.

ITEM 2-C-9: Refer to DRAWING BM102

1. Detail 1, AMEND as shown on Drawing BM02B attached to this addendum.

ITEM 2-C-10: Refer to DRAWING BM131

1. Detail 1, AMEND as shown on Drawing BM03B attached to this addendum.

ITEM 2-C-11: Refer to DRAWING BM132

1. Detail 1, AMEND as shown on Drawing BM04B attached to this addendum.

ITEM 2-C-12: Refer to DRAWING BM600

1. ‘Packaged Terminal Air Conditioner (PTAC) Schedule, ADD note 6 to PTAC-203.3, PTAC-203.4 and PTAC-209 to read as follows:

“6. PROVIDE WITH WIRELESS WEB-ENABLED BACNET CAPABLE CONTROLLER”

DRAWING MODIFICATIONS - ELECTRIC

ITEM 2-C-13: Refer to DRAWING BE101

1. Detail 1, AMEND as shown on Drawing BE01B attached to this addendum.

ITEM 2-C-14: Refer to DRAWING BE102

1. Detail 1, AMEND as shown on Drawing BE02B attached to this addendum.

ITEM 2-C-15: Refer to DRAWING BE161

1. Detail 1, AMEND as shown on Drawing BE03B attached to this addendum.

ITEM 2-C-16: Refer to DRAWING BE162

1. Detail 1, AMEND as shown on Drawing BE04B attached to this addendum.

END OF ADDENDUM



TETRA TECH
ARCHITECTS & ENGINEERS

INSTRUCTIONS TO BIDDERS
ATTACHMENT #1:
PRE-BID REQUEST FOR INTERPRETATION FORM

SUBMIT FORM BY EMAIL TO INE.Waverly@tetrattech.com

Project No.: 339070-24002

Date: 5/9/25

Project Name: Reconstruction to Elm Street Elementary School

Bidder Contact Person: Steve Maybeck
Bidder Company Name: Day Automation Systems
Bidder Phone: (585) 202-4247
Bidder Email Address: steve.maybeck@dayautomation.com

Question Pertains to:

Drawing Number:
Plan Area:
Room Number:
Drawing Detail Number:
Specification Section:

Question: (Please be specific)

1. There is new radiation shown in some of the rooms with new UV's. Is a separate control valve required for the radiation, or is it piped in series with the UV control valve?
 2. Drawing BM700 Detail 3 Sequence item 1.b. states that space temperature sensors shall be capable of setpoint adjustment. Other space sensors recently installed in this School District have not had this capability. Is temperature adjustment capability required at the space temperature sensors? (Temperature setpoint adjustment can be done from the DDC system Front End).
 3. Drawing BM700 Detail 3 Sequence of Operation refers to control of relief air and/or exhaust fans. Please clarify the scope of the controls work associated with relief air. Which existing relief ventilators require new controls (are some gravity reliefs)? Are new dampers and/or actuators required?
 4. Specification 238200 2.2 E. calls for packaged controls for the PTAC Units. Control schematic 5/BM700 calls for DDC controls for the PTAC Units. If the PTAC Units are to be DDC controlled, please specify PTAC Units to have RGYW connections for DDC interface.
-

Review by Architect/Engineers:

Responded By: P. Moloney **Date:** 5/15/25

1. The FTR shown on drawings BM131 and BM132 is enclosure only with no element.
 2. Provide setpoint adjustment capability per BM700, detail 3.
 3. Refer to addendum #2.
 4. Refer to addendum #2.
-

Submit requests not less than 5 working days prior to the specified Bid Opening date and time. In the event that this question requires clarification or modification of the Bidding Documents, such written information can only be provided by formal Addendum, distributed to all plan holders.



TETRA TECH
ARCHITECTS & ENGINEERS

INSTRUCTIONS TO BIDDERS
ATTACHMENT #1:
PRE-BID REQUEST FOR INTERPRETATION FORM

SUBMIT FORM BY EMAIL TO INE.Waverly@tetrattech.com

Project No.: 339070-24002

Date: 5/9/2025

Project Name: Reconstruction to Elm Street Elementary School

Bidder Contact Person: DON ROTTMANN
Bidder Company Name: STREETER ASSOCIATES INC.
Bidder Phone: 607-734-4151
Bidder Email Address: STREETER@STREETERASSOCIATES.COM OR DROTTMANN@

Question Pertains to:

Drawing Number: BS130 ROOF FRAMING
Plan Area:
Room Number:
Drawing Detail Number:
Specification Section:

Question: (Please be specific)

"ROOF RAILS" ARE SHOWN FOR 7 RTU'S. NOTHING IS SHOWN FOR OPENINGS THRU THE DECK, OR FOR THE DROP-IN FRAME DETAIL 2/BS130. ACCORDING TO 8/BM500 THESE RAILS SET ON TOP OF THE ROOF DECK? AND NOTHING IS SHOWN FOR RTU'S. PLEASE CLARIFY THE ACTUAL OP4S AND WHERE/ HOW THE FRAME FITS WITHIN DECK.

Review by Architect/Engineers:

Responded By:

Date:

AND HOW ARE THE ABOVE DECK RAILS FLASHED IN TO ROOF.

Rail Systems are supporting remote condensing units not RTU's so there are no additional openings or roof frames associated with the rails. Flashing details are on BM500. There are a few small roof hoods which will need roof opening framings per detail on BS130, coordinate with mechanical drawings. We believe that the structure in these areas are joists with metal and concrete deck.

N. Clark 5/14/2025

Submit requests not less than 5 working days prior to the specified Bid Opening date and time. In the event that this question requires clarification or modification of the Bidding Documents, such written information can only be provided by formal Addendum, distributed to all plan holders.



TETRA TECH
ARCHITECTS & ENGINEERS

INSTRUCTIONS TO BIDDERS
ATTACHMENT #1:
PRE-BID REQUEST FOR INTERPRETATION FORM

SUBMIT FORM BY EMAIL TO INE.Waverly@tetrattech.com

Project No.: 339070-24002

Date: 5/15/2025

Project Name: Reconstruction to Elm Street Elementary School

Bidder Contact Person: DON ROTTMANN
Bidder Company Name: STREETER ASSOCIATES INC.
Bidder Phone: 607-734-4151
Bidder Email Address: STREETER@STREETERASSOCIATES.COM OR DROTTMANN@

Question Pertains to:

Drawing Number: BM133 & BH102, BM103
Plan Area:
Room Number:
Drawing Detail Number:
Specification Section:

Question: (Please be specific)

ROOF ABATEMENT DWG IS MISSING ACM ROOF CUTS @ RTH SIDE FOR RTH2 & RTH3.
A&S DWGS DO NOT DETAIL DECK INFILL AS NEEDED FOR MC RMVL OF TWO HOOD/CURBS AT N.E. CORNER OF 1938 SIDE —
IS CONCRETE NEEDED TO INFILL WITH DECK, OR IS PLYWOOD OK?

Review by Architect/Engineers:

Responded By: N. Clark **Date:** 5/15/2025

Roofing penetrations at RTH-2 & RTH-3 will impact ACM roofing and will require abatement. Refer to Bid Addendum 2.

Refer to Bid Addendum 2 for BS01B typical deck infill detail.

Submit requests not less than 5 working days prior to the specified Bid Opening date and time. In the event that this question requires clarification or modification of the Bidding Documents, such written information can only be provided by formal Addendum, distributed to all plan holders.



TETRA TECH
ARCHITECTS & ENGINEERS

INSTRUCTIONS TO BIDDERS
ATTACHMENT #1:
PRE-BID REQUEST FOR INTERPRETATION FORM

SUBMIT FORM BY EMAIL TO INE.Waverly@tetrattech.com

Project No.: 339070-24002

Date: 5/15/2025

Project Name: Reconstruction to Elm Street Elementary School

Bidder Contact Person: DON ROTTMANN
Bidder Company Name: STREETER ASSOCIATES INC.
Bidder Phone: 607-734-4151
Bidder Email Address: STREETER@STREETERASSOCIATES.COM OR DROTTMANN@

Question Pertains to:

Drawing Number: BA102, BA131, BM132
Plan Area:
Room Number: RESOURCE ROOM 209 & OFFICE 203 B
Drawing Detail Number:
Specification Section:

Question: (Please be specific)

DEMO DWGS INDICATE TO CUT NEW LOUVER OPS IN EXTERIOR WALL
NEW PLAN DOES NOT INDICATE SAME
M DWGS ARE NOT CLEAR BUT APPEAR TO SHOW SLEEVE THRU WALL
ARE LOUVERS REQUIRED HERE? (2EA) WHAT SIZE?
(FOR FIGURING OPENING SIZE AND LINTELS)

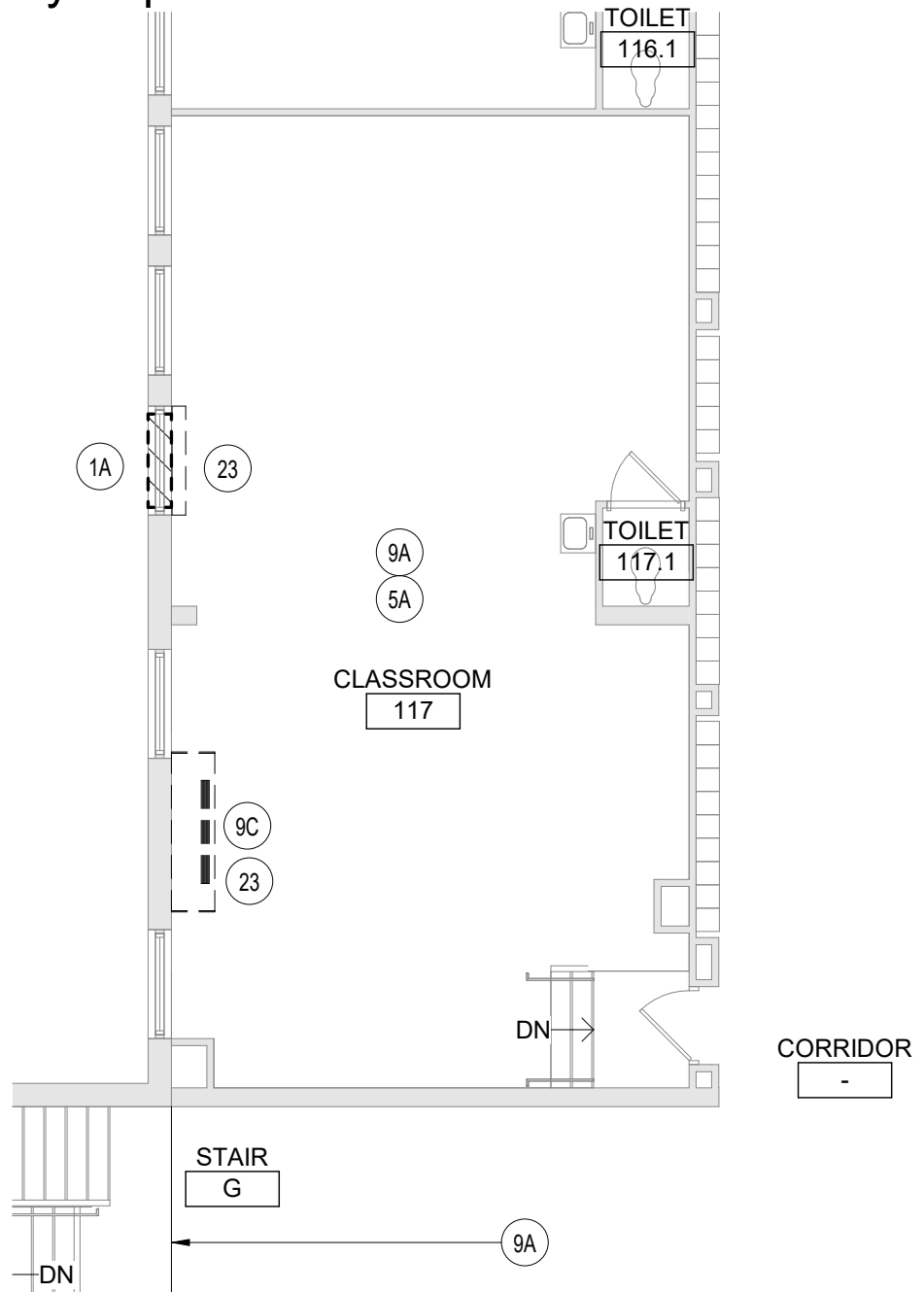
Review by Architect/Engineers:

Responded By: P. Moloney **Date:** 5/16/25

Refer to Bid Addendum #2.

Submit requests not less than 5 working days prior to the specified Bid Opening date and time. In the event that this question requires clarification or modification of the Bidding Documents, such written information can only be provided by formal Addendum, distributed to all plan holders.

This Drawing Partially Supercedes 1/BA101



BID SET

1

Partial First Floor Demolition Plan

1/8" = 1'-0"

This Drawing Issued
By Bid Addendum
No. 2



TETRA TECH
ARCHITECTS & ENGINEERS

Tetra Tech Engineers, Architects & Landscape Architects, P.C.

Rev.: Date:

Proj. No.: 339070-24002

Date: 05/14/25

Drawn By: KCB

Waverly Central School District

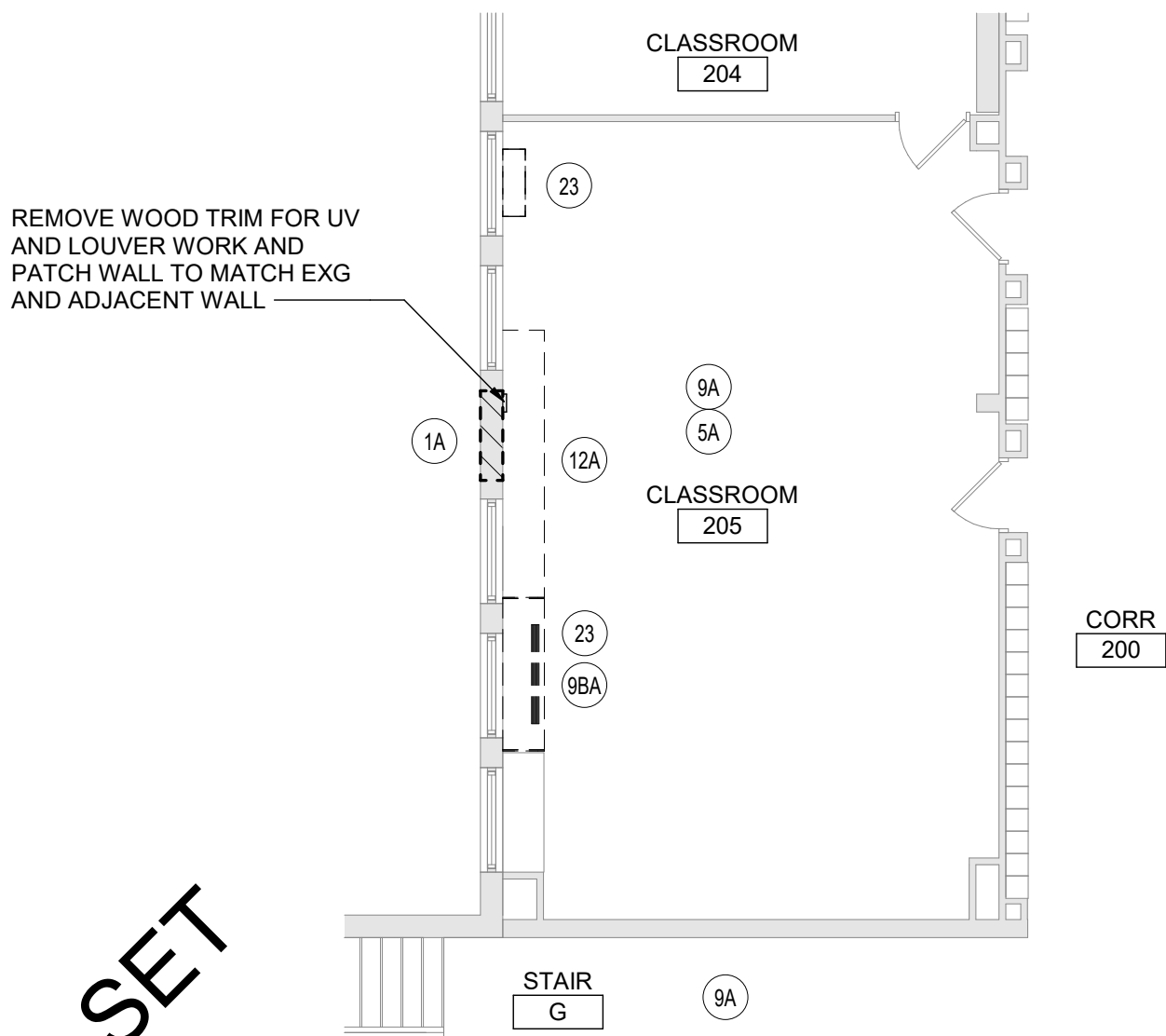
Elm Street Elementary School

Partial First Floor Demolition Plan

Drawing No.:

BA01B

This Drawing Partially Supersedes 1/BA102



BID SET

1

Partial Second Floor Demolition Plan

$$1/8'' = 1'-0''$$

This Drawing
Issued By Bid
Addendum No. 2



TETRA TECH
ARCHITECTS & ENGINEERS

Tetra Tech Engineers, Architects & Landscape Architects, P.C.

Proj. No.: 339070-24002

Date:05/14/25

Drawn By: KCB

Rev.:	Date:
-------	-------

Waverly Central School District

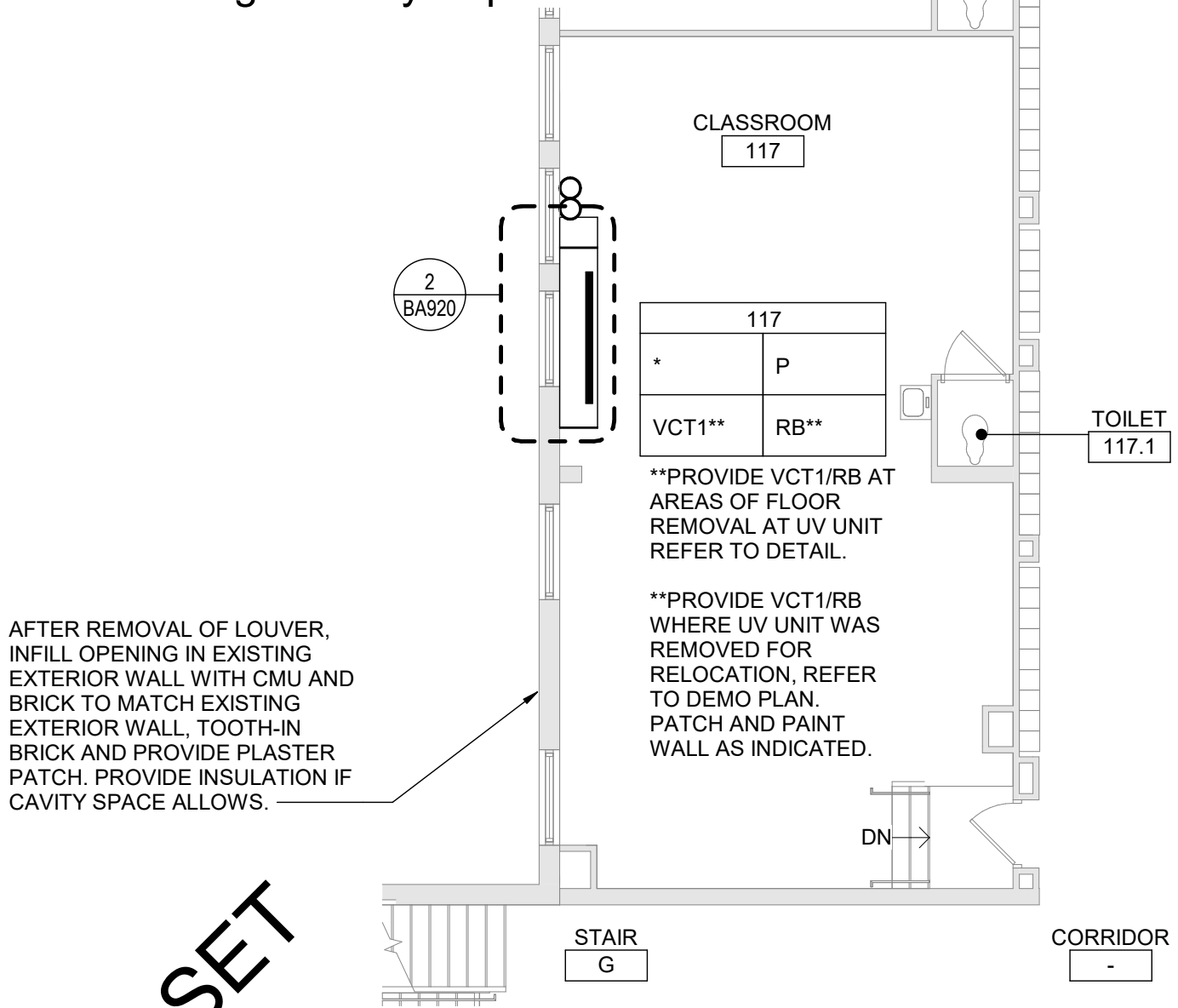
Elm Street Elementary School

Partial Second Floor Demolition Plan

Drawing No.:

BA02B

This Drawing Partially Supercedes 1/BA130



BID SET

1 Partial First Floor Plan
1/8" = 1'-0"

This Drawing Issued
By Bid Addendum
No. 2



TETRA TECH
ARCHITECTS & ENGINEERS

Tetra Tech Engineers, Architects & Landscape Architects, P.C.

Rev.: Date:

Proj. No.: 339070-24002

Date: 05/14/25

Drawn By: KCB

Waverly Central School District

Elm Street Elementary School

Partial First Floor Plan

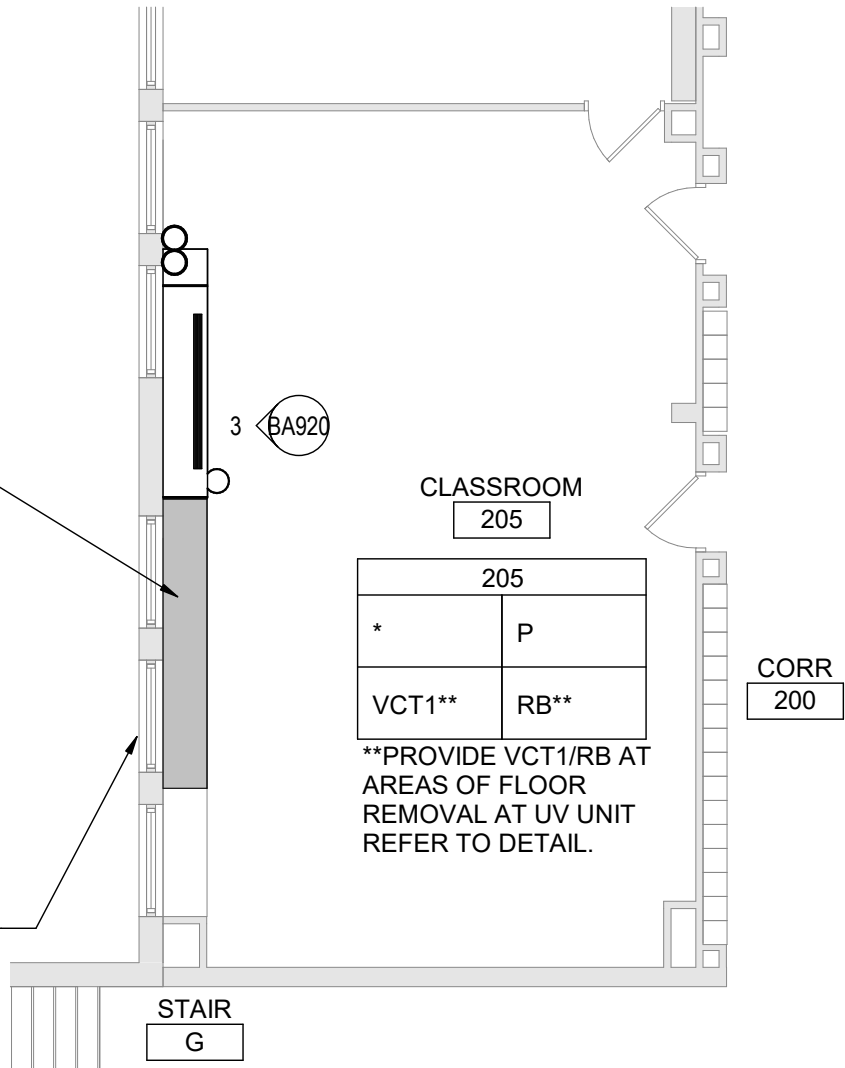
Drawing No.:

BA03B

This Drawing Partially Supercedes 1/BA131

SHADED AREA INDICATES
AREAS OF EXISTING
CASEWORK REMOVED THEN
REINSTALLED FOR NEW UV
INSTALLATION, TYP.

AFTER REMOVAL OF LOUVER,
INFILL OPENING IN EXISTING
EXTERIOR WALL WITH CMU AND
BRICK TO MATCH EXISTING
EXTERIOR WALL, TOOTH-IN
BRICK AND PROVIDE PLASTER
PATCH. PROVIDE INSULATION IF
CAVITY SPACE ALLOWS.



BID SET

1 Partial Second Floor Plan
1/8" = 1'-0"

This Drawing
Issued By Bid
Addendum No. 2



TETRA TECH
ARCHITECTS & ENGINEERS

Tetra Tech Engineers, Architects & Landscape Architects, P.C.

Rev.: Date:

Proj. No.: 339070-24002

Date: 05/14/25

Drawn By: KCB

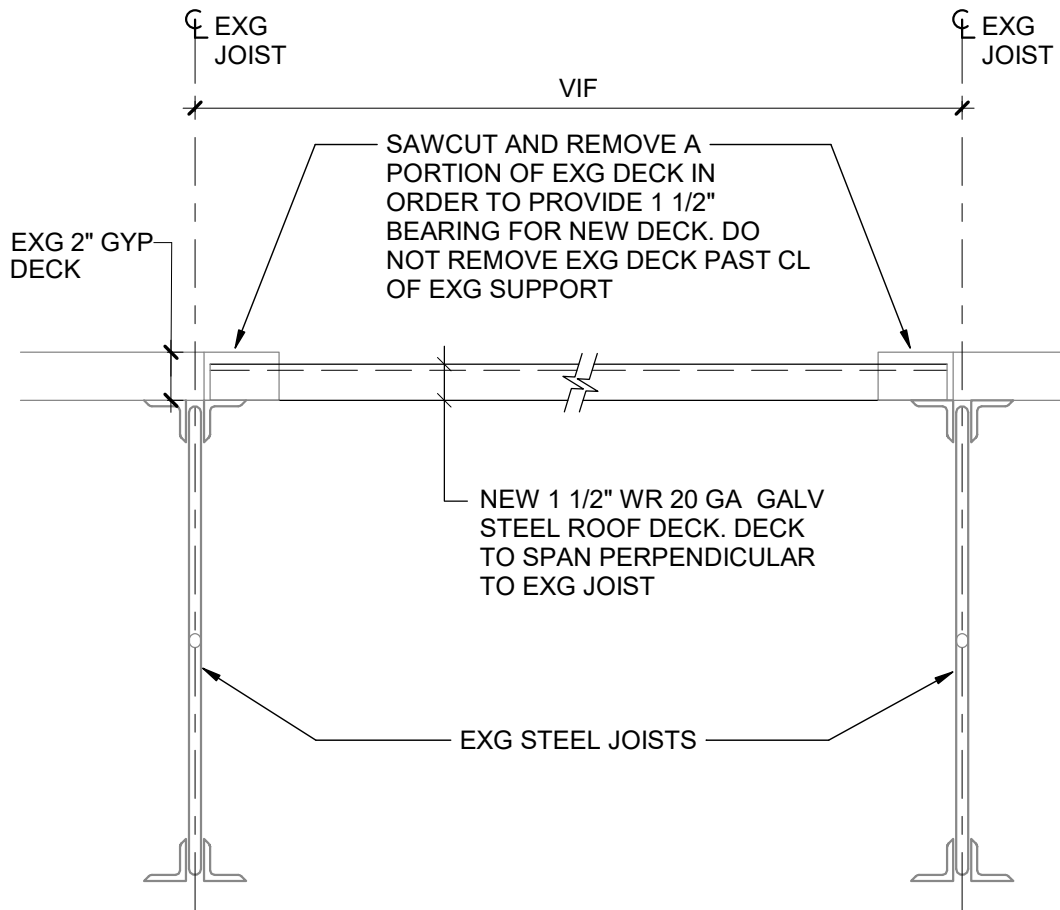
Waverly Central School District

Elm Street Elementary School

Partial Second Floor Plan

Drawing No.:

BA04B



1 Typ Deck Infill at Exg Opening
1 1/2" = 1'-0"

Issued by Bid Addendum No. 2



TETRA TECH
ARCHITECTS & ENGINEERS

Tetra Tech Engineers, Architects & Landscape Architects, P.C.

Rev.:

Date:

Proj. No.: 339070-24002

Date: 05/15/25

Drawn By: NDC

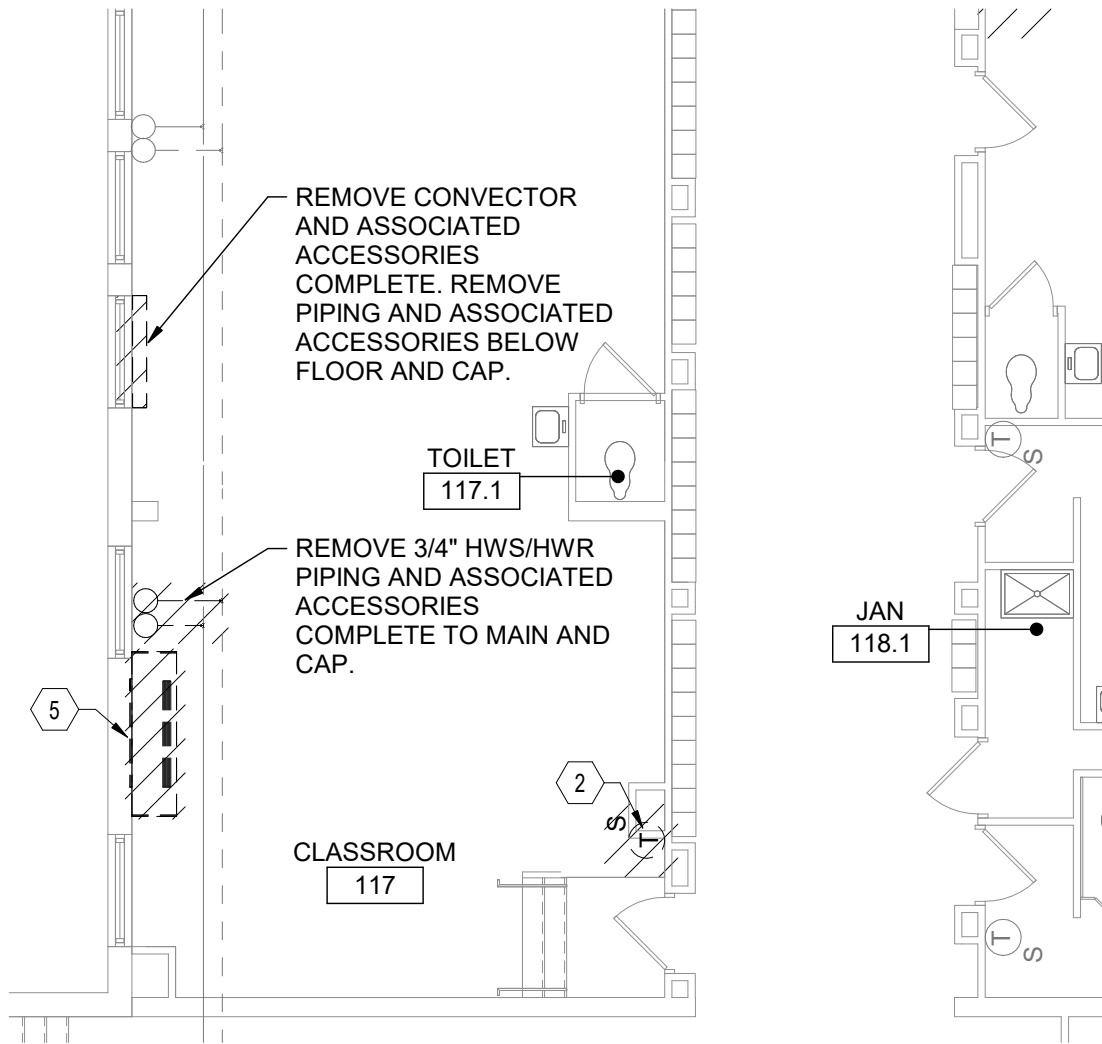
Waverly Central School District

Elm Street Elementary School

Typ Deck Infill at Exg Opening

Drawing No.:

BS01B



BID SET

1 Partial First Floor Demolition Plan
1/8" = 1'-0"

Issued By Bid Addendum #2



TETRA TECH
ARCHITECTS & ENGINEERS

Tetra Tech Engineers, Architects & Landscape Architects, P.C.

Rev.:

Date:

Proj. No.: 339070-24002

Date: 05/15/25

Drawn By: pgm/DPM

Waverly Central School District

Elm Street Elementary School

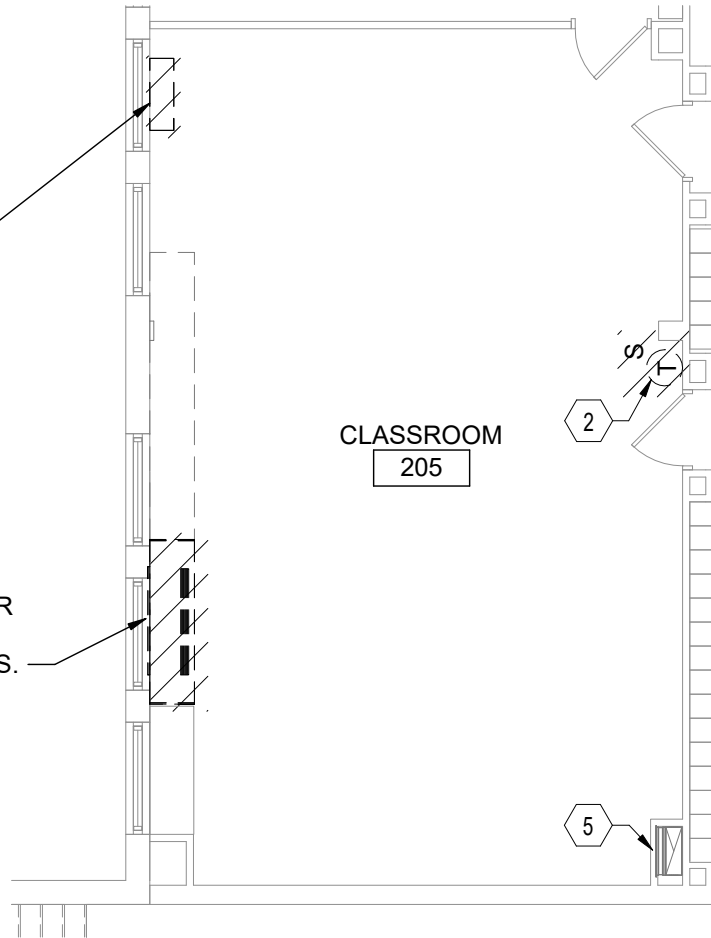
Partial First Floor Demolition Plan

Drawing No.:

BM01B

REMOVE CONVECTOR AND
ASSOCIATED ACCESSORIES
COMPLETE. REMOVE PIPING
AND ASSOCIATED
ACCESSORIES BACK TO MAIN
AND CAP.

REMOVE UNIT VENTILATOR AND
ASSOCIATED ACCESSORIES
COMPLETE. REMOVE OUTDOOR AIR
INTAKE SLEEVE AND LOUVER
COMPLETE. REMOVE HWS/HWR
PIPING AS REQUIRED FOR UV
REPLACEMENT, INCLUDING ALL NEAR
UV PIPING SPECIALTIES. SEE ARCH
DRAWINGS FOR WALL INFILL DETAILS.



1

Partial Second Floor Demolition Plan

1/8" = 1'-0"

BID SET

Issued By Bid Addendum #2



TETRA TECH
ARCHITECTS & ENGINEERS

Tetra Tech Engineers, Architects & Landscape Architects, P.C.

Rev.:

Date:

Proj. No.: 339070-24002

Date: 05/15/25

Drawn By: pgm/DPM

Waverly Central School District

Elm Street Elementary School

Partial Second Floor Demolition Plan

Drawing No.:

BM02B

PROVIDE VERTICAL PIPE ENCLOSURE. REFER TO DETAIL 7/BM500.

UV-117
1500 CFM

EXTEND 3/4"
HWS/HWR UP TO UV
ON FLOOR ABOVE

TOILET
116.1

CLASSROOM
117

TOILET
117.1

1" CD

3/4" CD

1" CD

JAN
118.1

1" CD

BID SET

1

Partial First Floor Plan

1/8" = 1'-0"

Issued By Bid Addendum #2



TETRA TECH
ARCHITECTS & ENGINEERS

Tetra Tech Engineers, Architects & Landscape Architects, P.C.

Rev.:

Date:

Proj. No.: 339070-24002

Date: 05/15/25

Drawn By: pgm/DPM

Waverly Central School District

Elm Street Elementary School

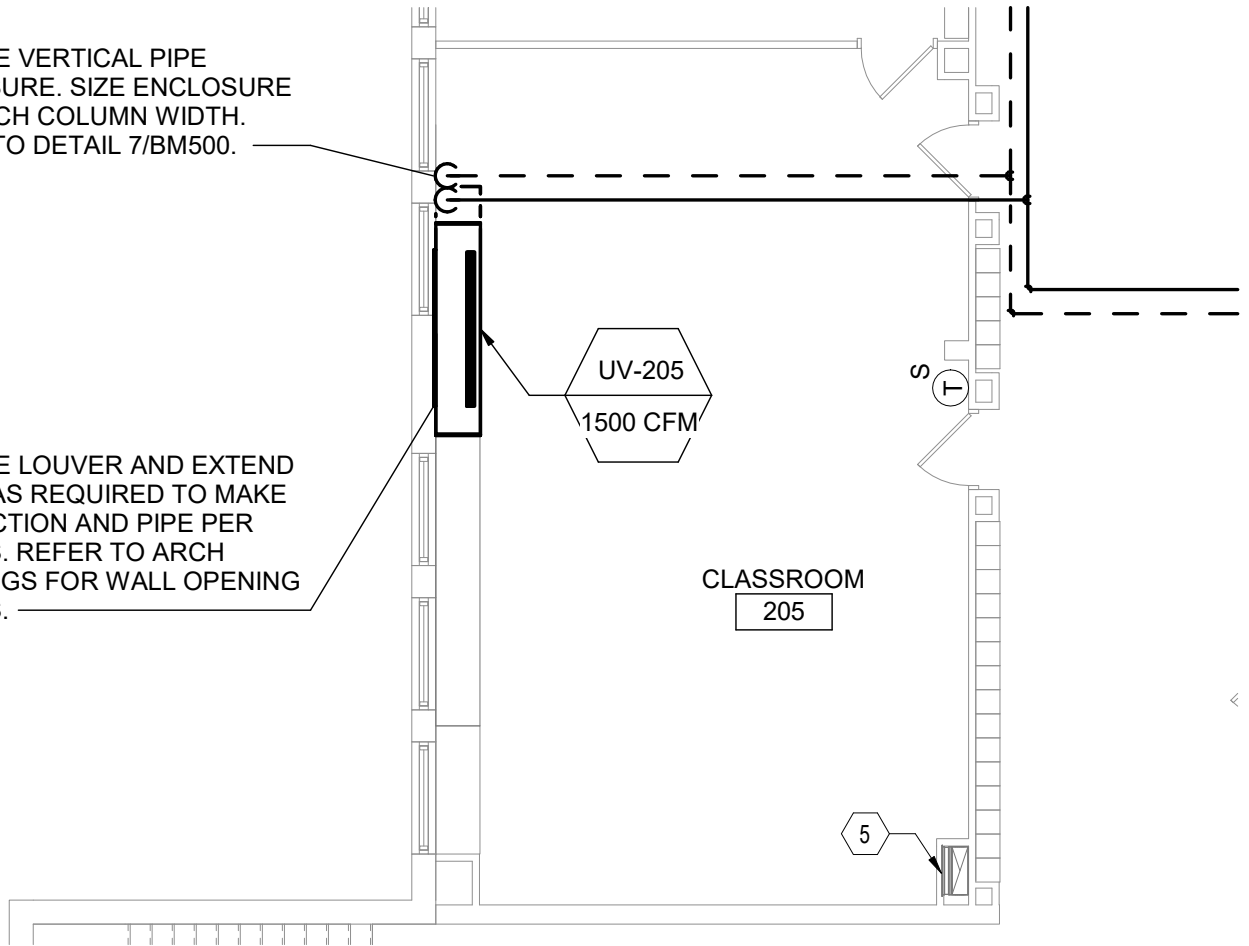
Partial First Floor Plan

Drawing No.:

BM03B

PROVIDE VERTICAL PIPE ENCLOSURE. SIZE ENCLOSURE TO MATCH COLUMN WIDTH. REFER TO DETAIL 7/BM500.

PROVIDE LOUVER AND EXTEND PIPING AS REQUIRED TO MAKE CONNECTION AND PIPE PER DETAILS. REFER TO ARCH DRAWINGS FOR WALL OPENING DETAILS.



BID SET

1

Partial Second Floor Plan

1/8" = 1'-0"

Issued By Bid Addendum #2



TETRA TECH
ARCHITECTS & ENGINEERS

Tetra Tech Engineers, Architects & Landscape Architects, P.C.

Rev.:

Date:

Proj. No.: 339070-24002

Date: 05/15/25

Drawn By: pgm/DPM

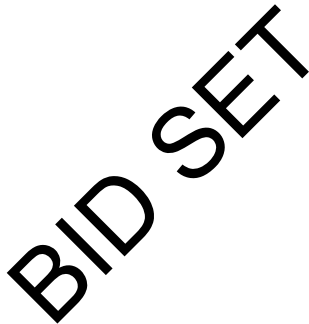
Waverly Central School District

Elm Street Elementary School

Partial Second Floor Plan

Drawing No.:

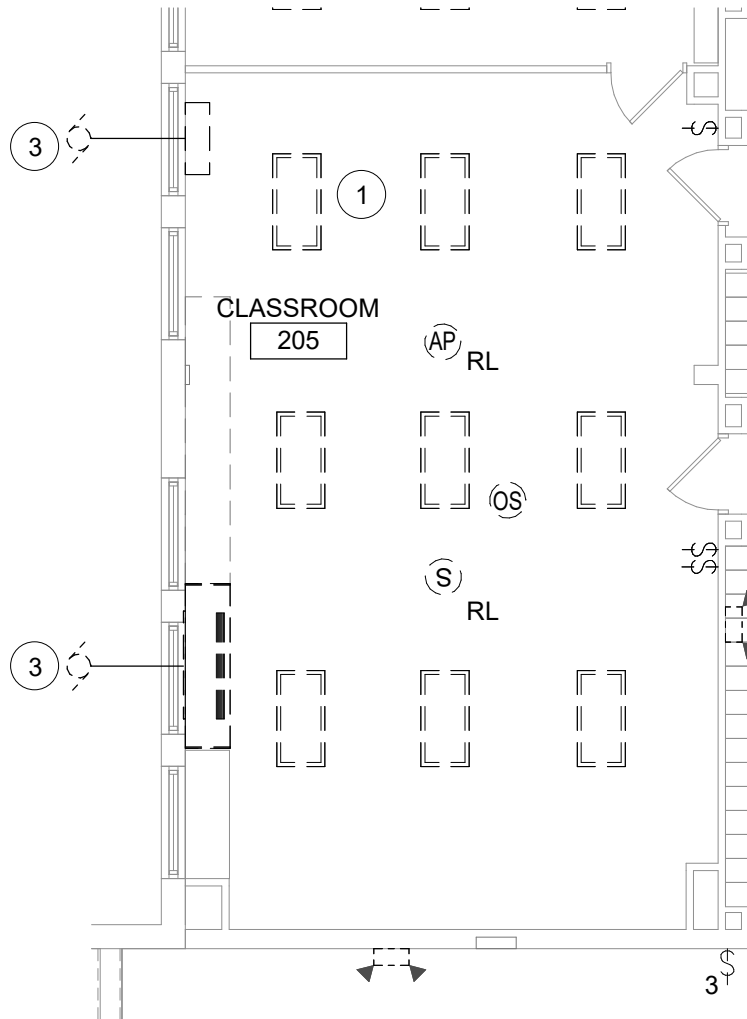
BM04B



THIS DRAWING PARTIALLY SUPERSEDES
DRAWING BE101

BE01B

BID SET



1 Partial Second Floor - Demolition Plan
1/8" = 1'-0"

THIS DRAWING PARTIALLY SUPERSEDES
DRAWING BE102



TETRA TECH
ARCHITECTS & ENGINEERS

Tetra Tech Engineers, Architects & Landscape Architects, P.C.

Rev.:

Date:

Proj. No.: 339070-24002

Date: 05/15/25

Drawn By: SAS

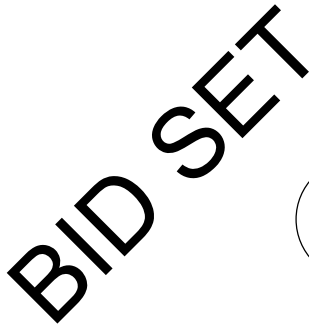
Waverly Central School District

Elm Street Elementary School

Partial Second Floor - Demolition Plan

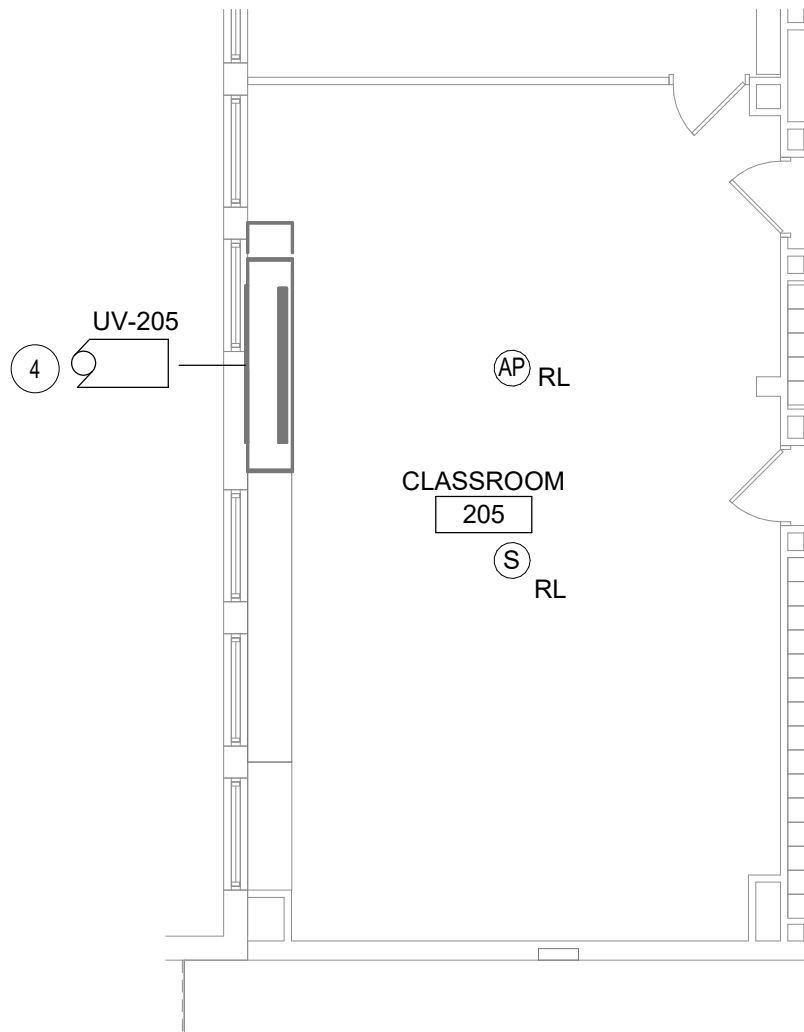
Drawing No.:

BE02B



THIS DRAWING PARTIALLY SUPERSEDES
DRAWING BE161

BE03B



BID SET

1 Partial Second Floor - Power & Comm Plan
1/8" = 1'-0"

THIS DRAWING PARTIALLY SUPERSEDES
DRAWING BE162



TETRA TECH
ARCHITECTS & ENGINEERS

Tetra Tech Engineers, Architects & Landscape Architects, P.C.

Rev.: Date:

Proj. No.: 339070-24002

Date: 05/15/25

Drawn By: SAS

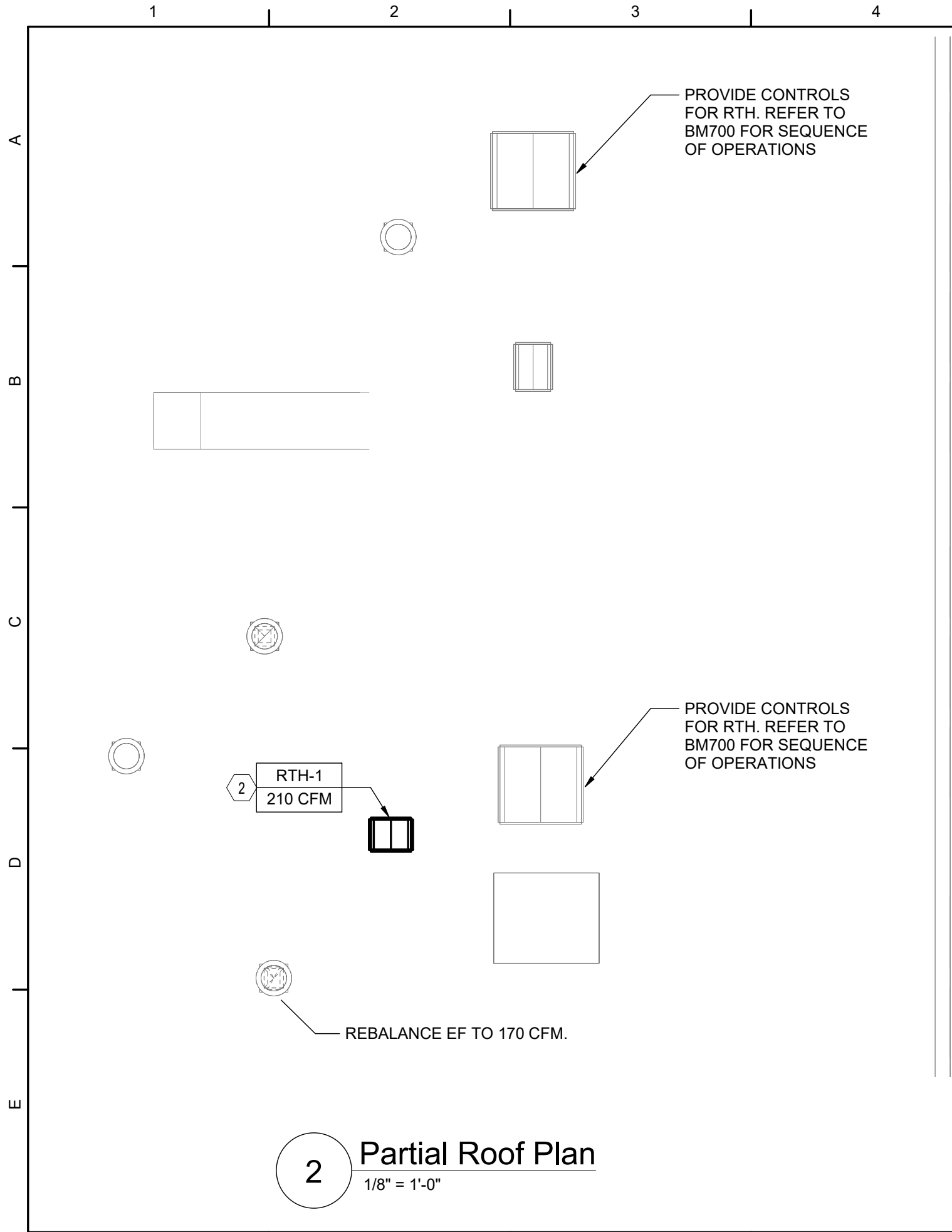
Waverly Central School District

Elm Street Elementary School

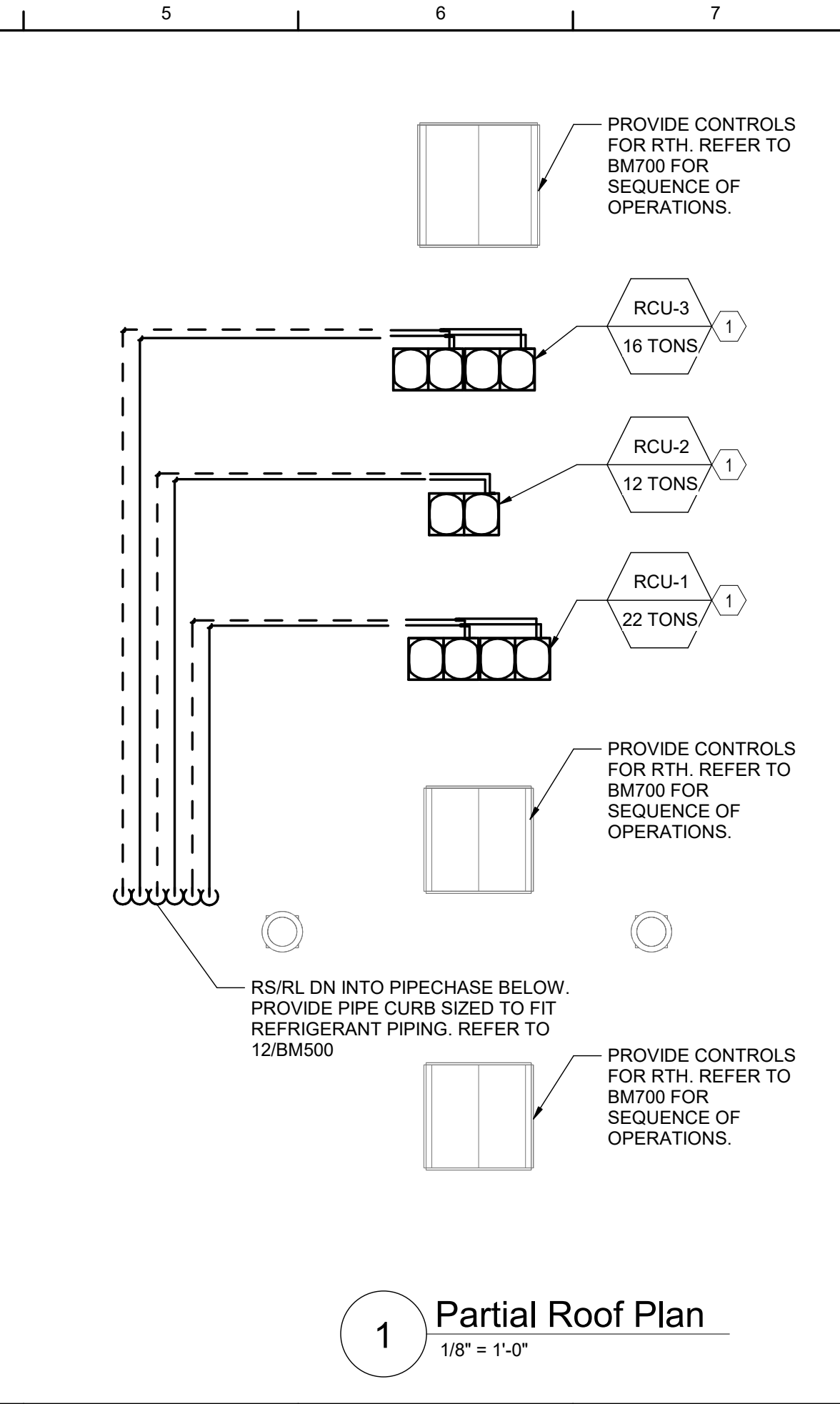
Partial Second Floor - Power & Comm Plan

Drawing No.:

BE04B

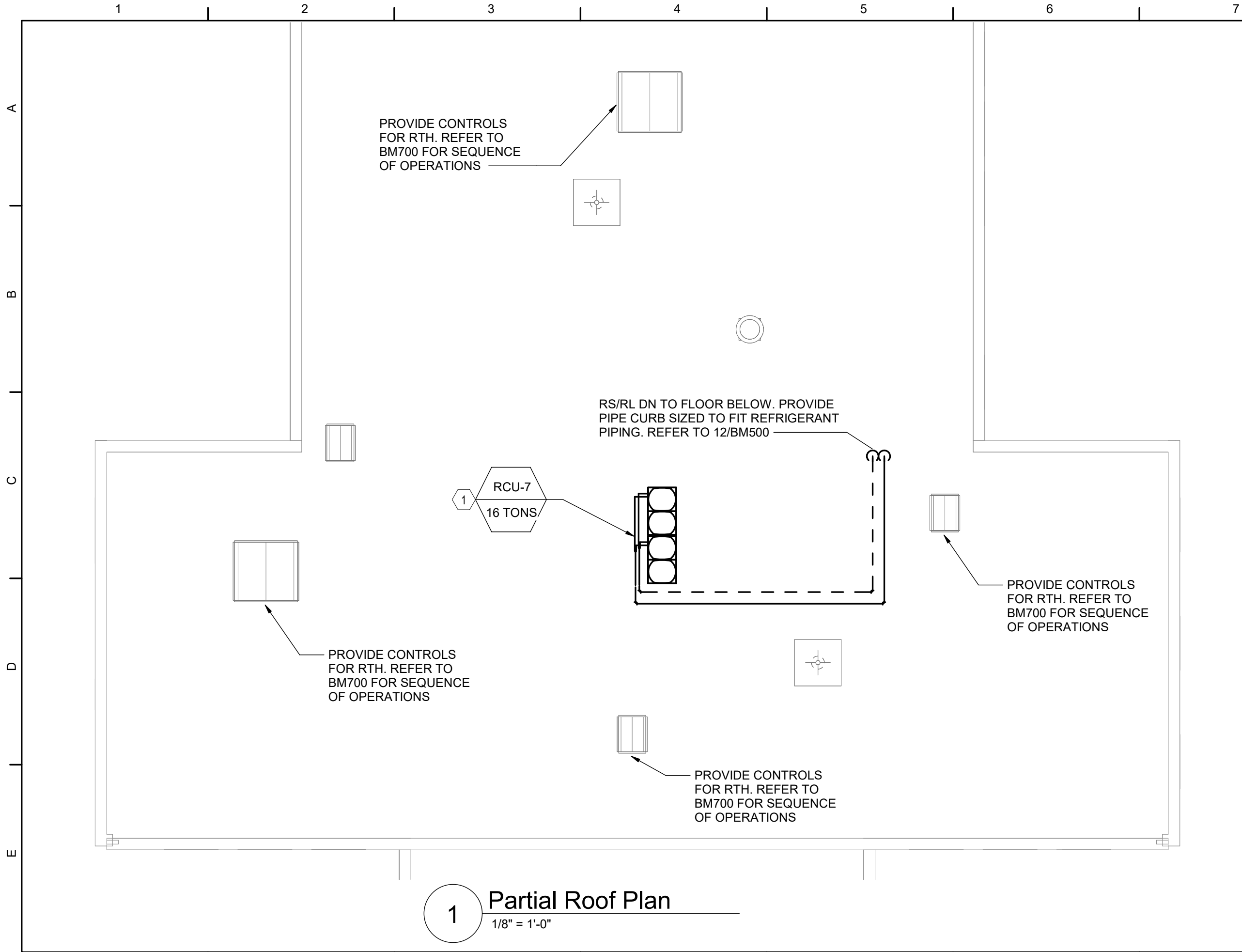


2 Partial Roof Plan
1/8" = 1'-0"



1 Partial Roof Plan
1/8" = 1'-0"

<div> <div>Proj. No.:339070-24002</div> <div>Date:05/15/25</div> <div>Drawn By: pgm/DPM</div> <div>Drawing No.:</div> <div>BM05B</div> </div>	<div>BID SET</div>			
<div> <div>TETRA TECH</div> <div>ARCHITECTS & ENGINEERS</div> <div>Tetra Tech Engineers, Architects & Landscape Architects, P.C.</div> </div>	<div>Waverly Central School District</div>		<div>Elm Street Elementary School</div>	
	<div>Partial Roof Plans</div>			



1 Partial Roof Plan
1/8" = 1'-0"



TETRA TECH
ARCHITECTS & ENGINEERS

Tetra Tech Engineers, Architects & Landscape Architects, P.C.

Waverly Central School District

Elm Street Elementary School

Partial Roof Plan

BID SET

Proj. No.:339070-24002

Date:05/15/25

Drawn By: pgm/DPM

Drawing No.:

BM06B